



2025 - Term 4, Week 5

Upcoming Events

WEEK 6

Monday 10 - Friday 14 November

- Gifts of Grace Week
- Tuesday 11 November*
 - Remembrance Day

WEEK 7

Tuesday 18 November

- Transition, Years 1 & 2 parent meeting 5:30pm

Thursday 20 November

- Awards Night & Year 12 Graduation

WEEK 8

Wednesday 26 November

- Year 5 PYP Exhibition 6:00pm

WEEK 9

Wednesday 3 December

- ELC - Year 5 Christmas Concert

Friday 5 December

- Year 5 Graduation Dinner

WEEK 10

Monday 8 & Tuesday 9 December

- Year 5 Step Up - Howard Springs Campus

Tuesday 9 December

- Step Up - ELC - Year 5

Wednesday 10 December

- Awards Assembly
- Last day of term

Front Office Hours

Mon - Wed, Fri
7.45am - 4.00pm
Thurs
7.45am - 3.15pm

Ph: 8983 0300 #3

sals.admin@ntschoools.net

Dear Families

Can you believe we are halfway through Term 4? This year has flown past, and whilst not without challenges, it has been a brilliant year of learning and community.

Earlier this term we were thrilled to unveil our beautiful new mural on the sports shed; a vibrant artwork that celebrates our community and our environment. Mrs Kitsos and the students' amazing work was recognised as Northern Territory winner of the Keep Australia Beautiful awards. This recognition highlights the commitment of our students, staff and families to caring for God's creation and keeping our school grounds a place of pride and beauty.

We also celebrated World Teachers' Day, taking time to acknowledge the incredible dedication of our teaching team. Our staff work tirelessly to prioritise the needs of our students each day; guiding, encouraging and inspiring them to learn and grow. It was heart-warming to hear students express gratitude for the many small things they appreciate about their teachers. From fun lessons and smiles, to patience, kindness and encouragement.

Our Year 5 students have been busily preparing for their PYP Exhibition, the big celebration of their learning journey in the Junior School. With the guidance of their mentors, the students have been developing their own questions and following lines of inquiry into topics that matter to them. Their investigations are wide-ranging – from the impact of music on education, to social justice, environmental issues, and even how vehicle engines work! It's been wonderful to see their curiosity, teamwork, and growing confidence as they begin to bring their projects to life. All families are welcome to join us at Cornerstone Church in Howard Springs on Wednesday 26th November at 6:00pm to celebrate their brilliant efforts.

Although there is still valuable teaching time remaining in 2025, teaching teams across our three Junior Campuses have already begun collaborating to plan for 2026. These sessions focus on aligning teaching and learning programs, ensuring consistency, and continuing to strengthen the quality of learning experiences for all students. This work is directly aligned with our College's key priority; Quality Teaching and Learning and reflects our ongoing commitment to improving student outcomes.

We give thanks for our teachers, our students, and our wider College community as we continue to learn, serve and grow together.

With Kindness
Tahlia Anver



From our Primary Years Programme Coordinator

Year 5 PYP Exhibition: Showcasing Passion, Purpose, and Action

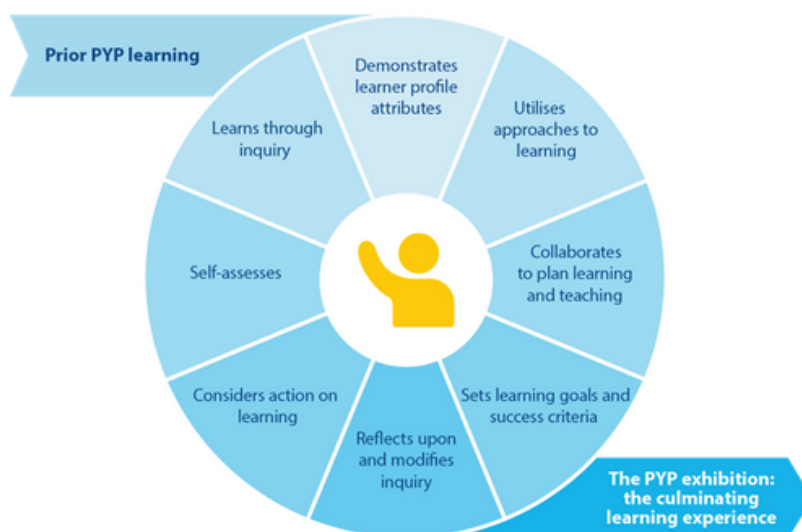
This term, our Year 5 students at Good Shepherd Lutheran College have been deeply engaged in their Primary Years Programme (PYP) Exhibition – a major milestone that marks the culmination of their primary school learning journey.

The Exhibition gives students the opportunity to explore an issue or opportunity they are passionate about, using their interests as a springboard to demonstrate how they have developed and applied their knowledge, conceptual understandings, skills, and learner profile attributes. Through their inquiries, students investigate meaningful topics that connect to real-world contexts, showing how their learning can make a difference to others.

Working individually, collaboratively with peers, and alongside a mentor, students take responsibility for their own learning – planning, researching, presenting, and reflecting on their process. They demonstrate initiative, creativity, and action as they explore how they can contribute positively to their community and the wider world.

The Exhibition is a celebration of the whole learning community. Teachers, mentors, and families play an important role in supporting and encouraging students throughout the journey. Together, we celebrate the growth of internationally minded young people who recognise their ability to shape a better future for themselves and others.

Rebecca Fletcher
PYP Curriculum Coordinator



Our new Shed Mural



From our Wellbeing Coordinator

Tena Koutou Katoa. (Hello to you all)

In this newsletter we will explore another important area of the SEARCH Framework—Strengths. Understanding strengths is a vital part of supporting children's growth and development. This is implemented here at Leanyer Campus through teaching and learning in units of inquiry.

Recognising and using character strengths can make a big difference in a child's life. They help children build positive relationships, manage challenges, and enhance their overall wellbeing. Strengths such as kindness, fairness, leadership, perseverance, and self-regulation are key qualities that continue to grow when they are noticed and encouraged.



When spending time with your child, take a moment to notice their strengths and identify areas that might still be developing. You might choose one skill to focus on together—this could be a learning skill like concentration during reading, writing, or maths, a life skill such as brushing teeth, washing dishes, or helping with shopping, or a social and emotional skill like using good manners or learning not to interrupt.

Children also benefit from learning to understand and manage their emotions, especially when faced with challenges. When you acknowledge your child's strengths by naming them and connecting them to positive emotions you help them recognise and take pride in these qualities. Over time, this builds confidence and resilience, encouraging children to use their strengths in all areas of life.

If you haven't yet had the chance, we invite you to take a moment to view our new outdoor display presentation on the SEARCH Framework and emotional granularity. This presentation highlights how developing a broad emotional vocabulary can help children better understand and express their feelings. We encourage you to explore the display and join us in teaching children a wider range of emotive words—helping them build empathy, resilience, and stronger emotional awareness.

Lastly, Mr Mike and Rosie Dog have been welcomed back again this term by many students who spend quality time supported by them.

We are mid-term now. This is a great time to pause and reflect on how far we've come and to set goals for the remaining weeks ahead. We're so proud of our students' efforts and the many ways they are demonstrating their strengths both inside and outside the classroom. Thank you, families, for your ongoing involvement and encouragement—together, we make learning meaningful and rewarding.

Until next time, Ka korero ahau ki a koutou (I will speak to you soon).

Donna Sudana
Wellbeing Coordinator



College Chaplain

If you wish to contact our College Chaplain, Kyle Cantrill,
please email kyle.cantrill@ntschoools.net

**"So God raised Christ to the highest place. God made the
name of Christ greater than every other name."**

Philippians 2:9 ICB

House Points - Current Tally



FENTON: 2624



STRAUSS: 1808



HUGHES: 1531



LIVINGSTONE: 2150

CONGRATULATIONS

PYP Superhero Awards!

Well done to the following students for receiving their PYP Superhero award at assembly:



WEEK 2

Evelyn Ch'ng
Noah Dias
Silas Couchman
Ellie Gabriel
Jackson Ringin
Tilly Patindol
Olive Apps
Tenzin Reeves
Sarish Dhital
Zhara Poulter
Claudia Dos Santos
Sharon Renny

FRENCH

Aaliyah Curran
Peliah Cheks-Ezeilo
Anderson Coates
Sallyanne Tungatalum
Savanna Hughes
Lachlan Jose

PYP Superhero Awards!

Well done to the following students for receiving their PYP Superhero award at assembly:

CONGRATULATIONS



WEEK 4

Rían Collins
Chase Peterken
Aaliyah Curran
Noya Chukwuemeka
Pelia Cheks-Ezeilo
Dominik Fernan
Fletcher Warren
Olivia Hillyer
Isabella De Vera
Ashish Atwal
Zikam Cheks-Ezeilo
Mettabel Philip

FRENCH

Noya Chukwuemeka
Rebecca Gaturu
Evannah Thekkayil
Aamiyah Thekkayil
Pavlos Spyropoulos
Andy Warren



Chapel - every Monday

Assembly - every second Thursday (even weeks)

8.30am at
Dreambuilders Church

Parents and caregivers
welcome!

Chapel

WEEK 8 TPC



Assembly

WEEK 6 4DS

WEEK 8 1RC

**WEEK 10 AWARDS
(Wednesday) ASSEMBLY**

**GOOD SHEPHERD
LUTHERAN COLLEGE**

COMMUNITY • RESPECT • SERVICE



You're invited to the
Good Shepherd Lutheran College

Awards Evening
and
Year 12 Graduation

Thursday 20 November
Arrive 6.00pm for a 6.30pm start

Darwin Convention Centre
Stokes Hill Rd, Darwin City

Please join us in celebrating our Year 12
graduating students, as well as presentation of
College Values Awards, Academic Excellence
Awards, Principal's Award, NT Board of Studies
Awards and much more!

**We look forward to
celebrating with you!**

**GOOD SHEPHERD
LUTHERAN COLLEGE**

COMMUNITY • RESPECT • SERVICE



You're invited to the
Good Shepherd Lutheran College

Leanyer Campus Year 5 Graduation & T-5 Awards

**Wednesday 10 December 8.30am
Dreambuilders Church
82 Leanyer Dr, Leanyer**

Please join us for the presentation of College Service Awards, Achievement Awards, Minister for Education and Training Excellence Awards and more!

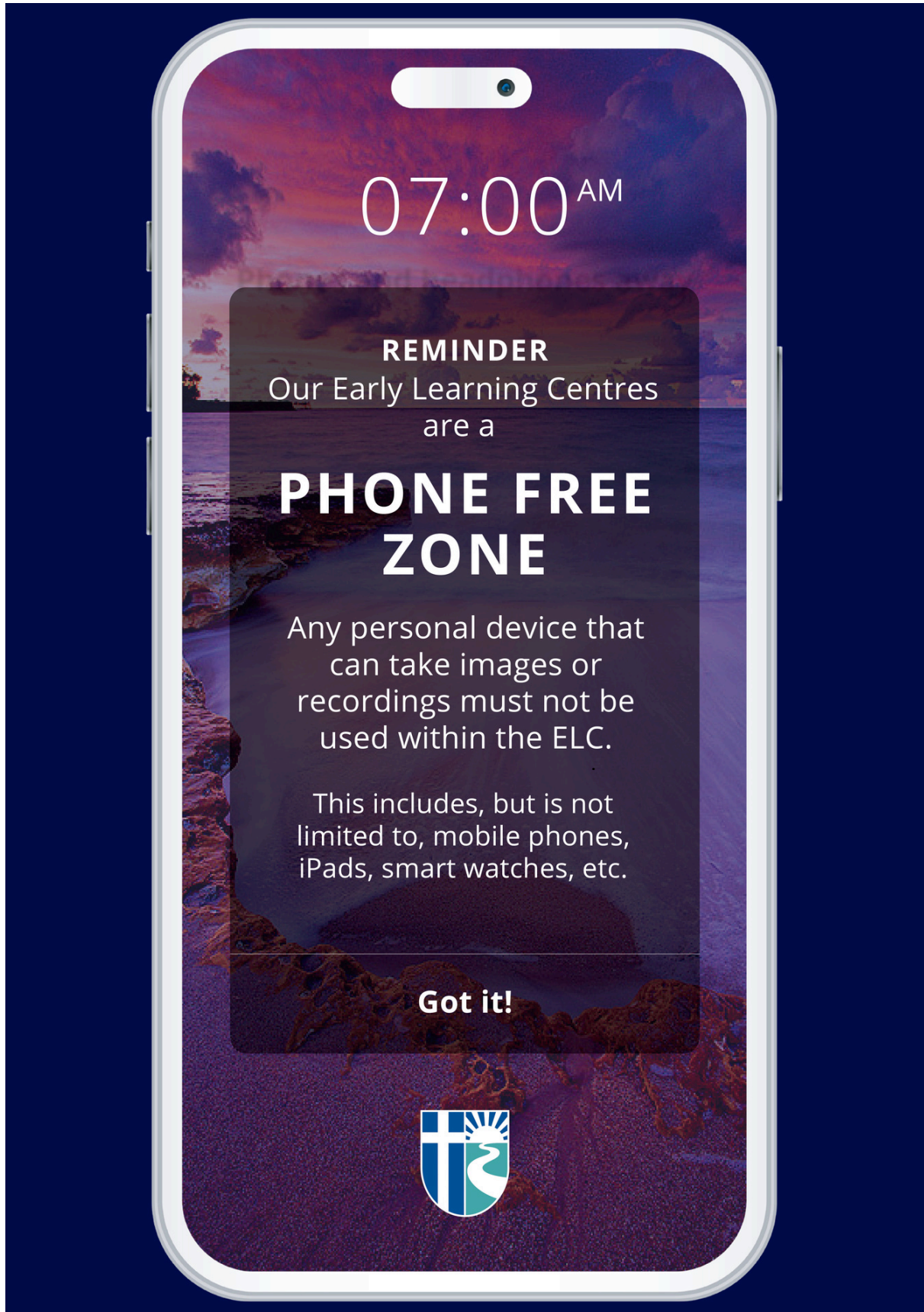
All remaining awards will be presented at the Awards Evening & Year 12 Graduation on Thursday 20 November at the Darwin Convention Centre.

We look forward to celebrating with you!

IMPORTANT UPDATE IN OUR ELCs

As part of our ongoing commitment to child safety, our Early Learning Centres are now a phone free zone. Any personal device that can take photos or recordings can not be used within our centres.

Thank you for helping us create a safe environment for our littlest learners!



GOOD SHEPHERD LUTHERAN COLLEGE UNIFORM SHOP

Holiday Closure and January Trading



Dear Parents and Carers,

The Uniform Shop's final day of trade for 2025 is **Tuesday 9th December**

All orders placed after this date during the holiday break will be dispatched or available for collection from Monday 19th January.

We will be open in January on the following dates:

Monday 19th January	7:30am - 3:30am	<i>Appointment Only</i>
Tuesday 20th January	7:30am - 3:30am	<i>Appointment Only</i>
Wednesday 21st January	7:30am - 3:30am	<i>Appointment Only</i>
Thursday 22nd January	7:30am - 3:30am	<i>Appointment Only</i>
Friday 23rd January	7:30am - 3:30am	<i>Appointment Only</i>
Tuesday 27th January	7:30am - 3:30am	<i>Appointment Only</i>
Wednesday 28th January	7:30am - 3:30am	<i>Appointment Only</i>
Thursday 29th January	7:30am - 3:30am	<i>Appointment Only</i>
Friday 30th January	7:30am - 3:30am	<i>Appointment Only</i>

First week back 2026, extended hours

Monday 2nd February	7:15am - 12 :00pm
---------------------------------------	-------------------

Regular Trading Hours Resume from Tuesday 3rd February

We look forward to welcoming you back into the shop in the new year!

HOW TO BOOK YOUR APPOINTMENT



Register or Sign In

Visit www.alintaapparel.com.au
Select 'Uniform Shop' then 'Register' or 'Sign In'.



Book your Fitting Appointment

Select 'Appointment' and choose from the available appointment times. You will receive an email confirmation once you have made your booking. One fitting appointment per child.



Attend your Fitting Appointment

You will be sent a reminder the day before your appointment. You will have the opportunity to place your order at the time of your appointment. We offer lay-by with only 20% deposit required.



0455 955 947



goodshepherd@alinta.com.au



Good Shepherd Lutheran College Uniform Shop @ 8 Whitewood Rd
Howard Springs NT 0835



HOUSE JIBBITZ

\$3 EACH OR 2 FOR \$5





**Christmas
Appeal**

**Donate
Gifts
& Food
here**



**Listed below are some items you
might like to donate this Christmas.**

FOOD

What to donate:

- Non-perishable items
- Supermarket gift cards
- Special Christmas items
- Food to suit kids & the elderly

GIFTS

What to donate:

- Gifts for all ages
- Gift cards
- Unwrapped gifts
- New items only

**COLLECTION WILL BE WEEK 8.
PLEASE DELIVER ANY GOODS TO THE FRONT OFFICE.**

Become a Foster or Kinship Carer in Greater Darwin Region

Open your hearts, open your home



Carers are urgently needed to
provide a safe and nurturing
home for children.

Learn about how to become a Foster or Kinship Carer by
contacting Foster and Kinship Carers Association NT.
Call 1300 352 268 or email info@fkca.org.au



YOUNG ARTIST PROGRAM OPEN DAY



Mon 17 Nov



The Playhouse, AANT Centre



4:15pm

Are you a musician in Year 5 – 12 keen to develop your skills? Come along to our Open Day for an opportunity to experience our Young Artists Program!

Bring your instrument for this free workshop session, held on The Playhouse stage at AANT Centre with current Young Artists, DSO Artistic Director/ Chief Conductor Jon Tooby, and Program Coordinator Stephanie Arnold.

Registrations are essential.

For any enquiries please contact Education & Outreach Coordinator, Stephanie Arnold at stephanie.arnold@cdu.edu.au.

For more information on the Young Artist Program visit:

<https://dso.org.au/education/young-artists/>

Program

4:15PM – 5:45PM
YAP Session

5:45PM – 6:15PM
Break with light snacks

6:15PM – 6:45PM
Watch DSO Rehearsal
(optional)



REGISTER HERE

DARWIN CHRISTMAS PAGEANT

SATURDAY 15 NOVEMBER 2025

Christmas returns to Darwin with a festive lineup of **FREE** events, kicking off with the *new* **City of Darwin Makers Market**, the **Darwin Christmas Pageant** and more in **Darwin City**.

NEW!

CITY OF DARWIN MAKERS MARKET

4:00 pm - 7:00 pm

Shop local makers and artists in **the Mall!**
Brought to you by Darwin City Retailers Association.

LORD MAYOR'S LIGHTING OF THE CHRISTMAS TREE

7:00 pm - 7:15 pm

Marvel as the Christmas Tree comes to life, through the lighting of Tree in **the Mall**.

DARWIN CHRISTMAS PAGEANT

6:00 pm - 6:45 pm

Celebrate the magic of the Christmas Parade, with family fun for all!

NEW!

CHRISTMAS CONCERT

7:30 pm - 9:00 pm

New this year — enjoy festive music, performances and food trucks serving a variety of cuisines from 5:00 pm in **Civic Park!**



THERE'S MORE!

To see what else is on, scan the QR code or visit darwin.nt.gov.au/christmas



Proudly sponsored by



Keep in touch!



Click to...



phone



web



email



facebook



instagram



linkedin

Howard Springs Campus

Cnr Whitewood Rd and Kundook Pl
Howard Springs

Leanyer Campus

94 Leanyer Dr
Leanyer

Palmerston Campus

Cnr Temple Tce and Emery Ave
Palmerston

Christmas Services

Wednesday 24 December 7.00pm
Christmas Eve Carols and Readings Service

Thursday 25 December 9.30am
Christmas Day Service

Sunday 28 December 9.30am
Worship Service - the final one for 2025



Top End Lutheran Parish

We welcome you to come and be a part of our community.
Our Sunday morning church service starts at 9.30am
14 Trower Road, Milner

Phone: 1300 TELP 00 (1300 8357 00)
Email: darwinlutheranchurch@gmail.com